

State of Wyoming Corner Record

(In compliance with the *CORNER PERPETUATION AND FILING ACT*, Wyoming Statutes, 1997 Section 33-29-140 et. seq., and the Rules and Regulations of the Board of Professional Engineers and Professional Land Surveyors)

Reverse side of this form may be used if more space is needed.

Record of original survey and citation of source of historical information (if corner is lost or obliterated). Description of corner monumentation evidence found and/or monument and accessories established to perpetuate the location of this corner. Sketch of relative location of monument, accessories, and reference points with course and distance to adjacent corner(s) (if determined in this survey). Method and rationale for reestablishment of lost or obliterated corner.

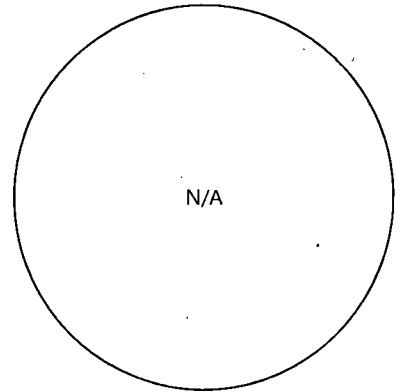
LOCATION: Southeast Corner of Section 34, T14N, R65W, 6th Principal Meridian, Laramie County.

RECORD: GLO - Set sandstone 20" x 12" x 8"

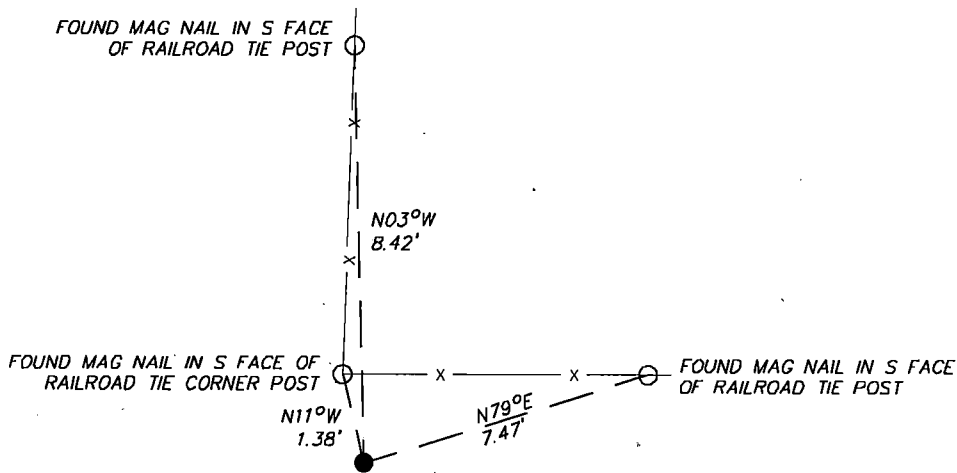
2001 - James Voeller found a 9" x 6" x 8" stone with 2 marks on the east face and 4 marks on the south. Notes a distance of 2632.82' to EQ 34-T14N-R65W, 2624.47' to SQ 35-T14N-R65W, and 5318.87' to SW 34-T14N-R65W.

RECOVERED: 2019 - Westwood Professional Services found 9" x 6" x 7" stone with markings as described in Voeller's 2001 survey and 3 ties.

RESET: Accepting location of the monument as the corner location.



Monument Inscription



Date of Field Work: 10/12/2019

Office Reference: 22237.02

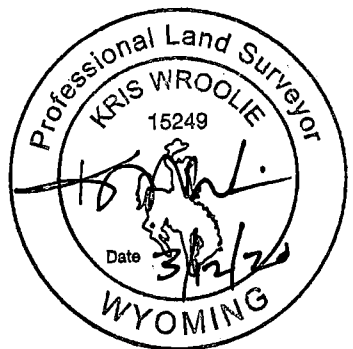
Cross Index Plat

	1	2	3	4	5	6	7	8	9	10	11	12	13	14	15	16	17	18	19	20	21	22	23	24	25		
A																											A
B																											B
C		6			5				4					3					2						1		C
D																											D
E																											E
F																											F
G			7			8				9				10					11						12		G
H																											H
J																											J
K																											K
L				18			17				16				15					14					13		L
M																											M
N																											N
O																											O
P				19				20				21				22				23					24		P
Q																											Q
R																											R
S																											S
T				30					29				28				27				26				25		T
U																											U
V																											V
W																											W
X				31				32				33				34				35				36		X	
Y																											Y
Z																											Z

Firm/Agency, Address
Westwood Professional Services
3701 12th St. N. Ste. 206
St. Cloud, MN 56303

Telephone Number: (320)-253-9495

This corner record was prepared by me or under my direction and supervision.
 SEAL & SIGNATURE



RECP #: 775859
 RECORDED 4/15/2020 AT 10:17 AM BK# 2668 PG# 291
 Debra K. Lee, CLERK OF LARAMIE COUNTY, WY PAGE 1 OF 1

Corner Name Southeast Corner Section 34, T 14 N, R 65 W, 6th P.M. Cross-Index No.: Z-17
 County: Laramie Wyoming